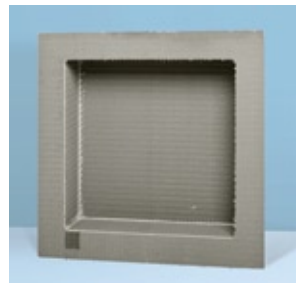


Fundo: Shower Accessories



wedi® Curb Over Square Edges
5' x 5" x 4 1/2"



wedi® Curb Over Square Edges
8' x 5" x 4 1/2"



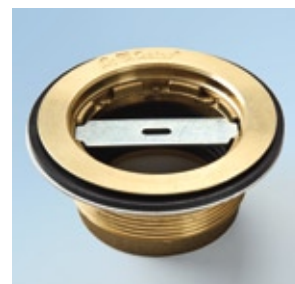
wedi® Corner Niche A



wedi® Corner Niche B



Fundo Drain Kit Standard,
PVC or ABS



Fundo Drain Kit,
brass



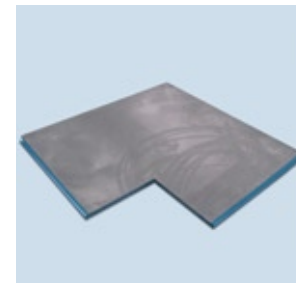
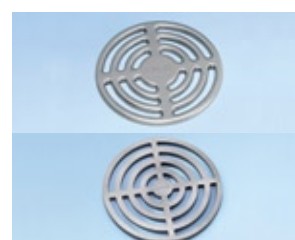
Rubber caulking gasket for cast iron
pipe connection



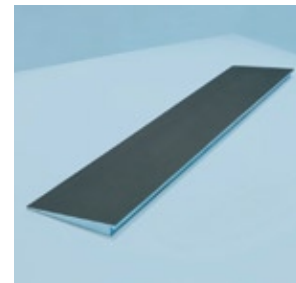
Fundo Standard, drain cover, stainless
steel, incl. plastic frames 4" x 4"



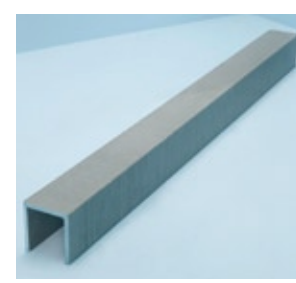
Fundo Fino Classic, drain cover, stainless steel, incl. stainless steel frames
4 3/4" x 4 3/4"



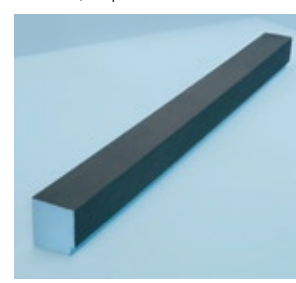
wedi® Balco Building Panel,
Corner Extension Panel
48" x 48" x 2" to 1 1/2"



wedi® Shower Ramp,
ADA compliant
5' x 12", sloped 1 1/2" to 1/4"



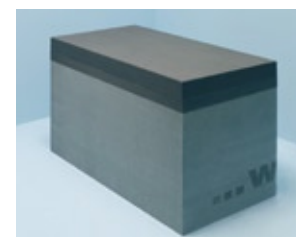
wedi® Curb Over Square Edges
5' x 5" x 4 1/2"
8' x 5" x 4 1/2"



wedi® Curb Full Foam Square Edges
5' x 5" x 4 1/2"
8' x 5" x 4 1/2"



wedi® Corner Seat M 17" x 17"
wedi® Corner Seat L 24" x 24"



wedi® Bench, rectangular
32" x 16" x 20", sloped



wedi® Triangle Seat, 45°
32" x 16" x 20", sloped



Fundo Standard, drain cover, stainless steel, incl. plastic frames
4" x 4"

Color	Color Reference
Brass	*019
Copper	*020
Chrome	*022
Brushed Nickel	*023
Oil Rubbed Bronze	*026



Be sure to ask for a
Certified wedi® Installer.

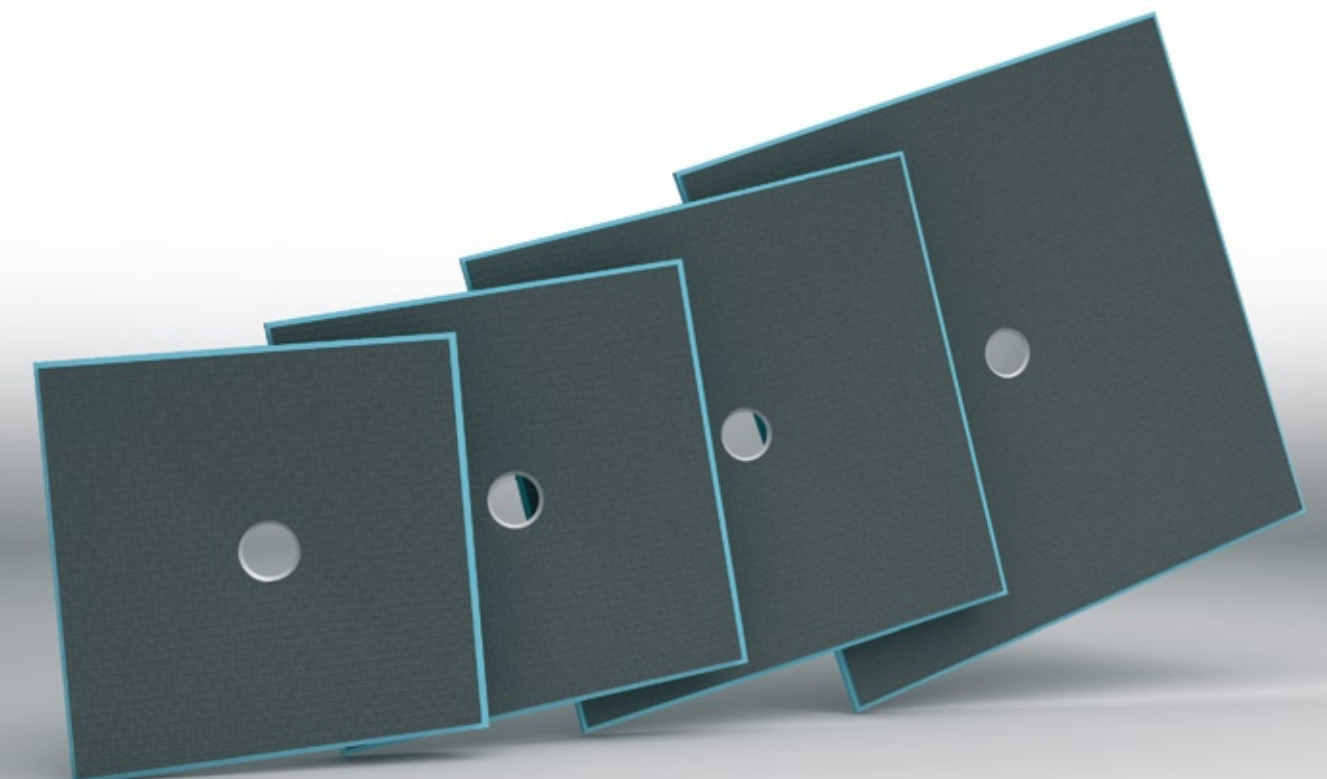


wedi Corporation
1100 Landmeier Road, Suite 200
Elk Grove Village, Illinois 60007
Tel. 877-933-wedi (9334)
Fax. 847-357-9819
info@wedicorp.com
www.wedicorp.com



Shower Systems

Total Shower Solutions



Fundo: The Total Solution

There are many ways to prepare and waterproof a shower for ceramic tile. Traditional methods are time consuming and difficult to do properly. Newer, experimental methods commonly contain material flaws and suffer from a poor track record of successful installations. Failures in showers amount to millions of dollars lost to contractors, homeowners and builders. Water damage leads to mold and mildew issues, which in turn increase warranty costs and heighten the number of unsatisfied homeowners.

The wedi® Fundo Shower Base is the ideal solution to this long-standing problem. The Fundo is a one step waterproofing system that offers a no risk, easy to install alternative to traditional and experimental methods. The wedi® Fundo base, composed of a closed cell extruded polystyrene foam, is 100% waterproof. With its coating of modified cement slurry and fiberglass mesh, the base is also exceptionally strong and rigid.

Used in conjunction with wedi® Building Panels on walls, the wedi® Fundo Shower Base ends multiple installation steps and eliminates the need for materials used in conventional installations—no more pre-sloping base liners, mud beds, waterproofing membranes and the weephole drain. It also eliminates risks related to conventional installations such as base liner cracks, clogged weepholes and mold growth in mud beds. These prefabricated wedi® shower pans help installers reduce installation time of shower bases from 2-3 days to 30 minutes. All wedi® shower substrate installations are tile-ready the same day.

Importantly, the wedi® systems save 80% of the weight that conventional systems add to building structures and offer thermal insulation value behind the tile. The Fundo Shower Base can be easily cut to size or extended using pre-sloped extension panels to make it fit the exact shower size.

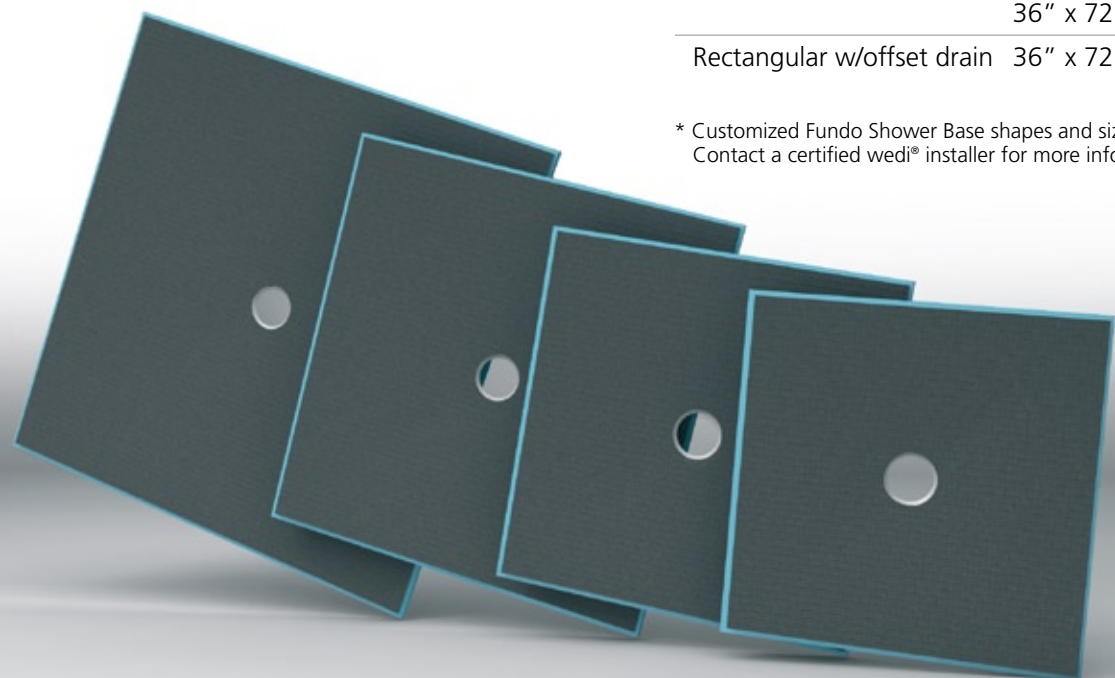
For over 25 years, wedi® has produced waterproof materials for ceramic tile installations and today we're the worldwide market leader for waterproof foam core underlayments. With a commitment to offer system solutions, wedi® uses cutting edge technology and the finest materials available to provide unparalleled quality.

wedi® has developed shower accessories, curbs, niches, benches and seats to be used in conjunction with the wedi® Building Panel and Fundo Shower Base to offer the only complete tile-ready, waterproof shower system on the market.

Fundo Shower Base standard shapes and dimensions*

Square w/center drain	36" x 36" incl. drain 48" x 48" incl. drain 60" x 60" incl. drain 72" x 72" incl. drain
Rectangular w/center drain	36" x 48" incl. drain 36" x 60" incl. drain 48" x 60" incl. drain 48" x 72" incl. drain 60" x 72" incl. drain 48" x 84" incl. drain 60" x 84" incl. drain 36" x 72" incl. drain
Rectangular w/offset drain	36" x 72" incl. drain

* Customized Fundo Shower Base shapes and sizes are also available. Contact a certified wedi® installer for more information.



- Tools & Materials**
- Bucket
 - Notch Trowel
 - Drill with Thinset Mixer
 - Utility Knife
 - Straight Edge/T Square 5 ft or longer
 - Speed Square
 - Caulk Gun
 - Handsaw
 - Flat Head Screwdriver
 - Screw gun
 - Solid Putty Knife
 - Paper Towels
 - Level
 - Circular Saw
 - Saw Horse
 - Tape Measure
 - Permanent Marker
 - Extension Cord for Powertools

Installing wedi® Fundo Shower Base onto wooden floors

- Before Installation**
- Have 2 x 2 x 4's installed between the studs (horizontally/ on floor) to back the bottom of wedi® wall assembly
 - Subfloor is sound, level and meets deflection criteria.
 - 2" PVC or ABS pipe is cut flush/level with subfloor top surface and is centered.
 - 2" drain assembly below floor is stabilized and will not sink under water load.
 - Only wedi® products (Building Panels, Curb, Joint Sealant and Fasteners) are used for wedi® Fundo Shower System assembly.
 - Installer has received instructions from wedi® technical sales staff or is informed about proper installation methods as described.

- 1 Cut the 2" pipe flush to the surface of the floor construction. Make sure that the cut out fits to the Fundo panel drain. Cut out a 5" diameter hole around the 2" pipe to allow the wedi® drain to be inserted into the subfloor. The drain and trap have to be sturdily fastened to the sub floor.
- 2 Assemble the drain unit following the instruction drawing.
- 3 Set up a continuous 1/4" bead of wedi® sealant along the top side of the wedi® Fundo's valve groove profile.
- 4 Drop the drain body firmly into the sealant.
- 5 Turn the Fundo base upside down and apply the rubber and the fiber gasket.
- 6 Tighten the gaskets firmly to the pans steel ring using the locking nut. Make sure the drain body is still safely received in the valve-bead of sealant.
- 7 Skim coat the thinset ANSI 118.4 and comb through with a 1/4" x 1/4" notched trowel. Channels pointing to the entrance.
- 8 Trowel the thinset on the rear side of the Fundo again using a 1/4" x 1/4" notched trowel.

- 9 Press the Fundo firmly into the thinset bed, ensuring that the installation is level and void free. Apply some weight equally and for at least 30 minutes (thinset bags).
- 10 Set up the rubber caulking gasket (with the beveled side up) around the 2" pipe in the subfloor. The rubber gasket must be flush with the upper end of the 2" ABS or PVC pipe.
- 11 Tighten (squeeze) the rubber caulking gasket firmly with the caulking nut (use a flat headed screwdriver) and finally insert the plastic frame and strainer on top (without adhesive). The frame and strainer will be held in a flexible grout joint.
- 12 Set up a continuous 1/2" bead of wedi® sealant along the pans channel on the outer perimeter.
- 13 You are ready to install the wedi® panels around the Fundo, fixed and sealed in the Fundo channels bead of sealant. Fasten the panels directly to the studs using one wedi® fastener per foot. One extra fastener is set in between seams of panels to create a flush transition.
- 14 Set up continuous 1/2" beads of sealant between and in all seams to adjacent panels. Excessive sealant is smoothed out using a putty knife. An additional 1/2" bead of caulk is set along the inside bottom joints connecting the wall panels and base and spread flat over the joint. All fasteners are covered with sealant.
- 15 wedi® Niches are installed in a cut out in the wedi® wall and attach with it's flange right into the center of 16 o.c. studs. wedi® joint sealant is set along the connection of wall to niche.
- 16 2 Fasteners each side of the niche are set to create a flush transition to the wall panels. Another 1/2" bead of wedi® sealant is spread over fasteners and seams.
- 17 A continuous 1/2" bead of sealant is set into the channel and along the vertical curb sealant is set against both wedi® walls. A 1/2" bed of thin set mortar is set on the floor. The tightly cut to fit curb is pressed into the connection.
- 18 Weight is applied for 30 minutes and another 1/2" bead of wedi® sealant is spread along all curb joints.

After Installation

- Using a 2" drain plug, the wedi® pressure fit drain/sealing gasket is water tested prior to ceramic tile installation.
- All bottom perimeter joints, curb joints and vertical joints are covered with wedi® joint sealant. Coverage should be continuously visible for at least 3/4" on each side of the joint.
- No mastic adhesives are used to install ceramic tile. A high quality modified thinset mortar is recommended.

For more detailed assembly instructions, please go to wedicorp.com.



Riolito: Linear Shower Drain

The wedi® Fundo Riolo is a unique and fully prefabricated tileable unit featuring linear or channel drains. Water drains away through a narrow gap between the cover plate and adjacent tiling. The wedi® Fundo Riolo shower drain can be installed with wedi® Building Panels and Curbs to guarantee a waterproof assembly.

The Riolo offers three cover plate options for the integrated channel drain, each made of high quality stainless steel. By adjusting cover plate height, the Fundo Riolo can be combined with nearly any tile or natural stone surface, in a range of thicknesses from 1/4" to 1/2" for the Standard or Deluxe channel covers and from 1/4" to 3/4" for the tileable channel cover. The Riolo includes a drain set that can be glued to a 2" pipe (ending 1-1/8" below floor top surface) using solvent cement glue.

The Riolo is a great solution to enable homeowners, designers and installers to take bath design into the future. Fully tested for superior performance, this system is the ideal blend of innovation and practical application.

Useful Facts:

- The drainage rate is 16 gal/minute.
- The prefabricated slope is 1/4 in/ft.
- Even large-format tiles can be used in the thinbed process. Fundo Riolo has a true level slope and is ideal where ADA requirements should be met.

